

# EXALT

GIVE | GROW | GLORIFY

## A Note from Jordan

The Lord planted Redeemer Presbyterian Church in 1996. For twenty-five years, He has used our congregation to extend His kingdom in Collin County. Hundreds of members have been added. Two churches have been planted. Numerous missionaries have been supported. Leaders have been trained and sent, and He has sustained and strengthened us through it all. We can say with the psalmist, **“The LORD has done great things for us; we are glad” | Psalm 126:3.**

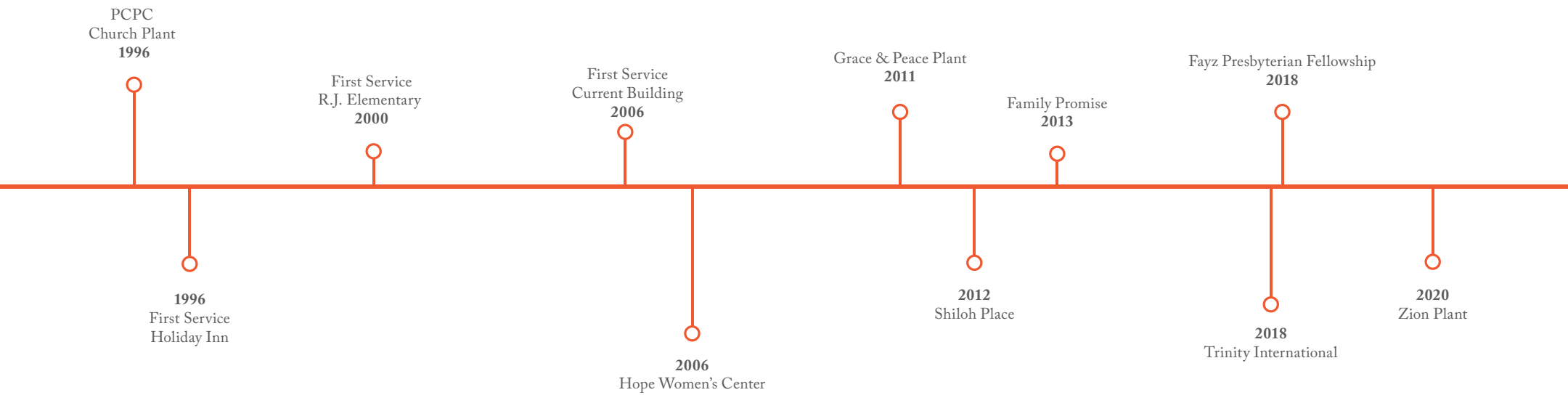
His blessing has been so great that we now face significant strains on our numeric capacity and ministry capability. Since 2019, the elders have pursued the possibility of expanding our facilities to serve the next generation of Redeemer's ministry. We have prayed together, investigated options, and sought wisdom on the next phase of expansion. After all this, we believe the time is right for such a project.

Redeemer's desire has always been to exalt and enjoy Jesus Christ. That very aim drives our expansion plans. Extending our facility is vital for the next generation to exalt the Savior in all things. The Exalt vision is not so much a campaign as it is a calling. **“He who calls you is faithful; he will surely do it” | 1 Thessalonians 5:24.**



**Jordan Stone**  
Senior Pastor  
Redeemer Presbyterian Church

# God's Faithfulness to Redeemer



- As a church plant from Park Cities Presbyterian Church, Redeemer held its first service at the Holiday Inn in McKinney, Texas on
- September 1996. Redeemer's first service in our existing church building was on Easter of 2006. With God's grace, our congregation
- grew and we undertook an expansion to the sanctuary and kitchen in 2009. From our inception, our Lord has called Redeemer to focus
- on Missions and Church Planting. Some notable Missions include Hope Women's Center initiated in 2006, Shiloh Place in 2012, and
- Family Promise in 2013. In 2011, we planted Grace and Peace in Anna, Texas; in 2020, Zion Presbyterian Church was planted in
- Prosper, Texas. Presently, Trinity Local International, a Mandarin speaking congregation offers services at Redeemer and in November
- 2018, Fayz (Grace) Presbyterian Fellowship conducted its first Farsi worship service at RPC.

# Exalt the Lord our God

The word **EXALT** is foundational for Redeemer, and is found in our mission statement:

**“REDEEMER EXISTS TO EXALT AND ENJOY JESUS CHRIST.”**

Webster’s Dictionary defines the word **EXALT** in this way:

- : to raise in rank, power, or character
- : to elevate by praise or in estimation : GLORIFY
- : to raise high : ELEVATE
- : to enhance the activity of : INTENSIFY

For 25 years, in humble reliance upon the Word of God and prayer, Redeemer Presbyterian Church endeavors to exalt our Lord and Savior, Jesus Christ, and enjoy the blessing of his faithfulness as we worship Him, love one another, and serve His church locally and abroad.



## 1 Peter 4:10-11

“As each has received a gift, use it to serve one another, as good stewards of God's varied grace: whoever speaks, as one who speaks oracles of God; whoever serves, as one who serves by the strength that God supplies—in order that in everything God may be glorified through Jesus Christ. To him belong glory and dominion forever and ever. Amen.”

God's word shows us the responsibilities and the blessings of giving. The act of giving is our acknowledgement that everything we have—spiritual and material—has been given to us, entrusted for our stewardship and intended for God's glory and the good of God's people. Our giving is an act of worship, a reflection of God's kindness and provision. Every member at RPC is being spiritually equipped for the work of ministry, and sacrificially giving and serving our Redeemer family and our community is a mark of spiritual maturity. Our giving should be in proportion to what we have received through God's goodness, and it should come from a cheerful and expectant heart. **EXALT** is our vision for how to best steward the abundant gifts and blessings the Lord has given to us.

## Our Duty and Delight



As we remember the past and envision the future, we believe God is supplying Redeemer to further His Kingdom in Collin County and beyond.

**GIVE | to serve one another, as each has received a gift.**

**GROW | by using our gifts to make church ministry effective.**

**GLORIFY | so that in everything God may be glorified.**

Every believer has received various gifts from God, and it is our duty and delight to use our gifts for the edification of the church. | **Romans 12:6-7**

# Beyond the Pulpit

## RELEVANT NUMBERS

| Communing & Non-Communing Members |

294  
JANUARY 2018

504  
JANUARY 2022

71%  
GROWTH

## LOCAL MISSIONS

HOPE Women's Center  
Shiloh Place  
Redeemer Foster  
Mission McKinney  
Evangelism Explosion  
Trinity International  
Fayz Presbyterian Fellowship  
Kairos Prison Ministry  
Metanoia Prison Ministry  
RUF • UNT  
RUF • UTD  
RUF • TCU  
Grief Support  
New City • Celina  
New City Fellowship • Dallas  
Zion Presbyterian • Prosper

## WORLD MISSIONS

Richey & Keli Goodrich • Australia  
Dave & Darlene Eby • Uganda  
Ben & Anna Graber • Germany  
Hunter & Laura Quinn • South Africa  
Paul-Billy & Shirley Arnold • India  
Makoto Fukuda • Japan  
A.R.T.S Student Scholarships  
To Every Tribe  
For The Nations  
Horizon International

## WEEKDAY MINISTRIES

RYG • Redeemer Youth Group  
WIC • Women's Ministry  
MIC • Men's Ministry  
College Ministry  
Grief Share  
Adult Choir  
Children's Choir  
Small Groups • 6  
ESL  
Classical Conversations • 480 Students  
Music Recitals

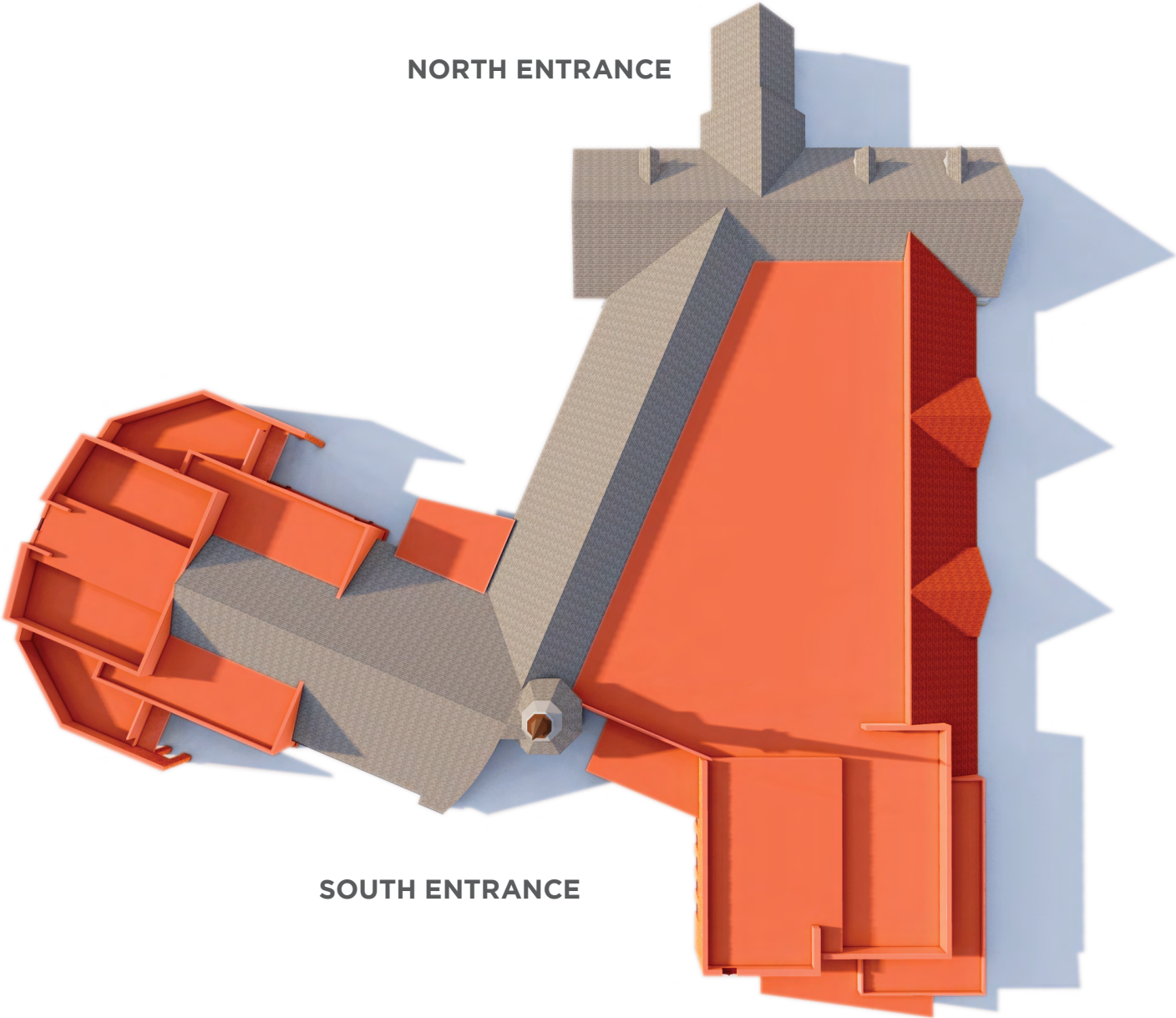
## CHURCH PLANTS

Grace & Peace • Anna, TX.  
Zion Presbyterian • Prosper, TX.

# The Expansion

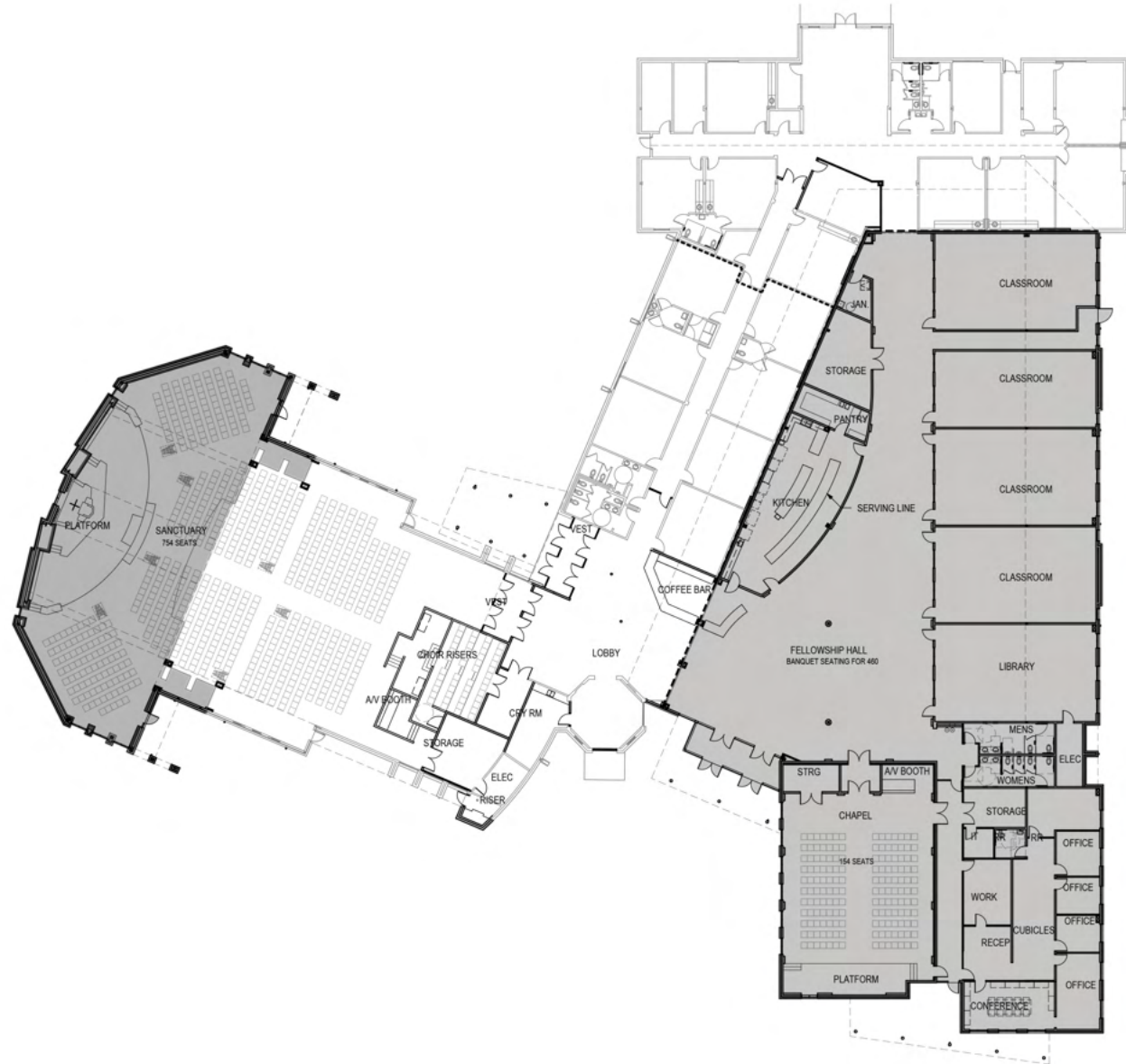
● **EXISTING**  
(20,346 sq. ft)

● **EXPANSION**  
(24,865 sq.ft)



# The Blueprint

**SANCTUARY + 4,688 sq. ft**  
**EAST WING + 20,177 sq. ft**  
**TOTAL = 45,211 sq. ft**







**SOUTH ENTRANCE**





SOUTH ENTRANCE • FROM SILVERADO TRAIL





**SOUTH ENTRANCE**





SANCTUARY EXTERIOR • SOUTH SIDE





SANCTUARY EXTERIOR • WEST SIDE





SANCTUARY EXTERIOR • NORTHWEST SIDE





SANCTUARY EXTERIOR • NORTH SIDE





EAST WING • FROM ALMA ROAD





SANCTUARY • ENTRANCE





SANCTUARY • FROM PIANO





FELLOWSHIP HALL • EXITING SANCTUARY





FELLOWSHIP HALL • SOUTH ENTRANCE





FELLOWSHIP HALL • EXITING CHAPEL





FELLOWSHIP HALL





CHAPEL

### Exalt Committee

Shawn Arthur  
Lori Bajema  
Keisha Blackmon  
Sherri Hoos  
Brittany Lewis  
Marty Sudac  
Nate Sung  
Stewart Teasley  
Mark Trigsted

### Building Committee

Norm Heersink  
Greg Lewis  
Nate Sung  
Stewart Teasley  
Richard Thomas  
Mark Trigsted



### Elders

Shawn Arthur  
Bob Ledford  
Matt Linebarger  
Mike Lovelace  
Steve Lytle  
Gary Matlack  
Chris Newman  
David Ray  
Jordan Stone  
Nate Sung  
Mark Trigsted  
Dann Wann  
Tim Yates

### Deacons

Bob Burgess  
Nick Dyer  
Richie Floyd  
Ian Grey  
Jensen Hall  
Norm Heersink  
Tim Hoos  
Greg Lewis  
Ty Wheeler

[redeemermckinney.com/exalt](https://redeemermckinney.com/exalt)